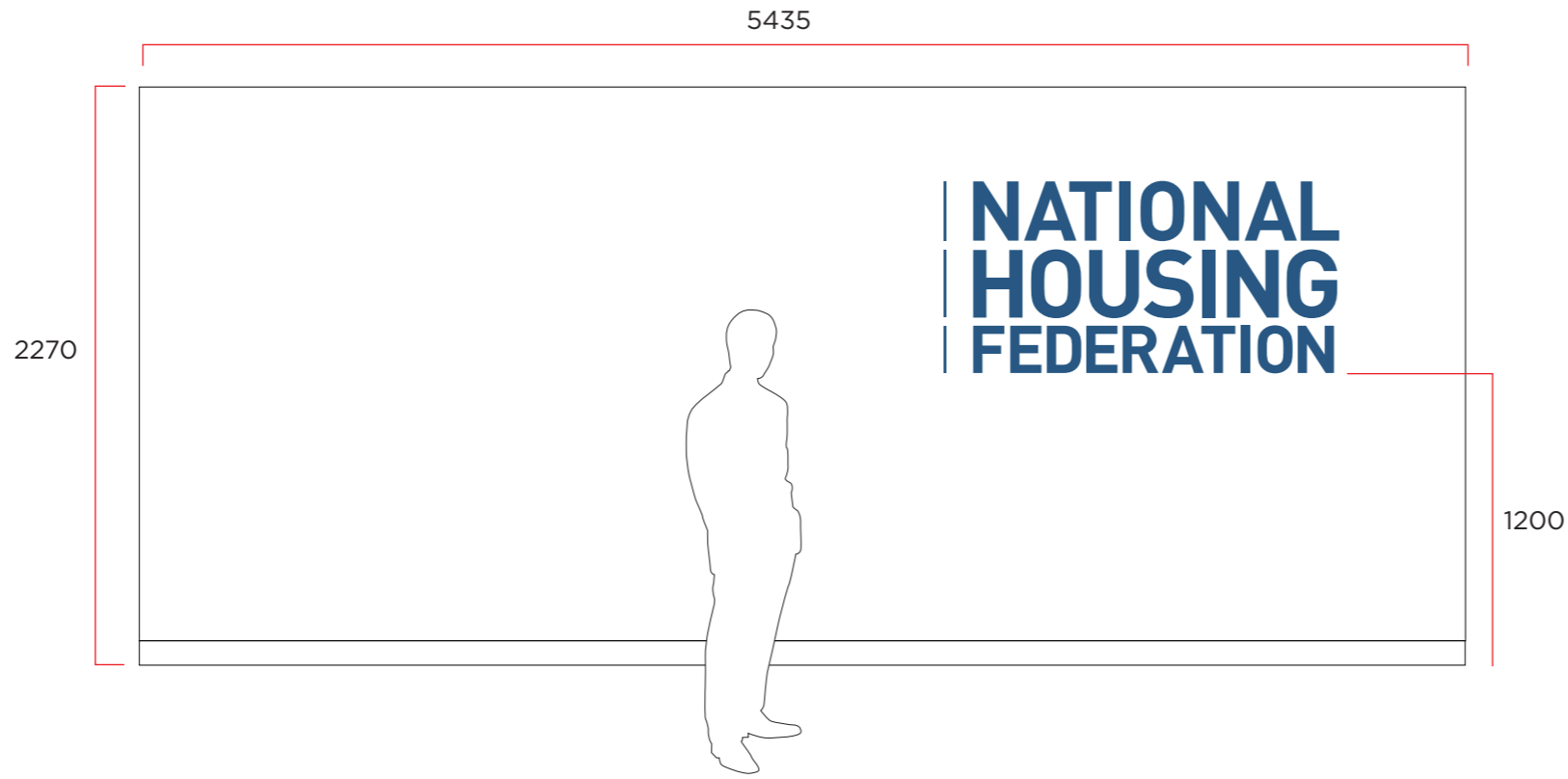


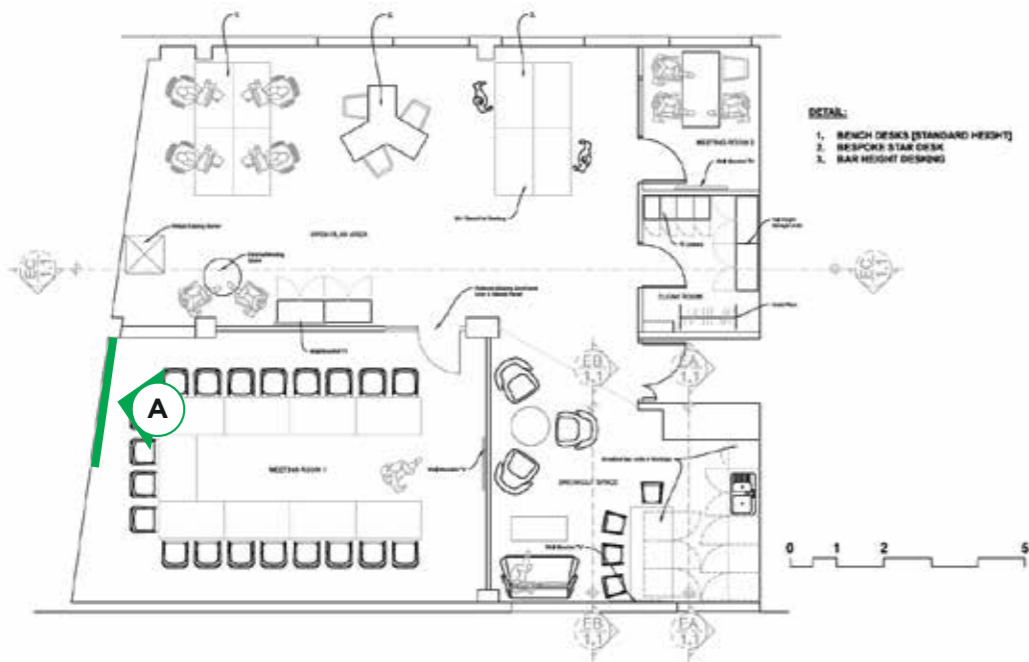


Pantone 2161C

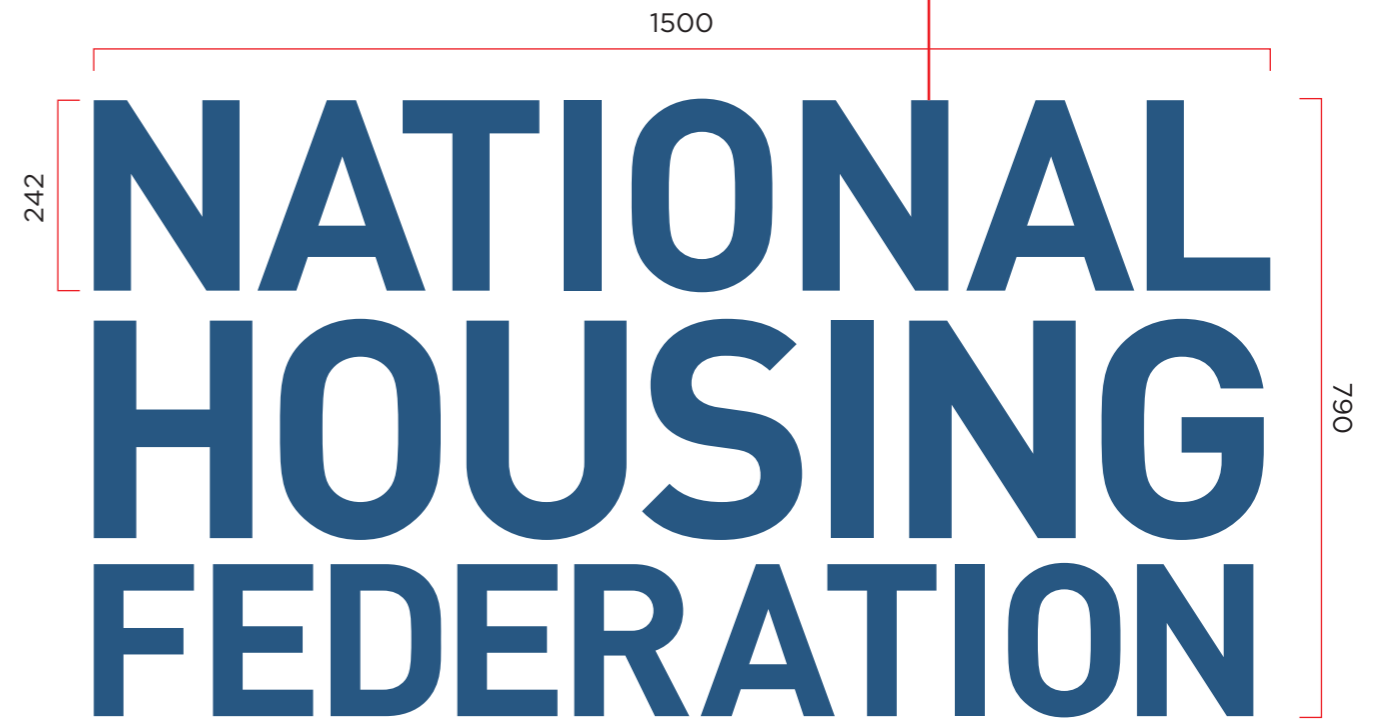


**A**  
 SPRAYED ACRYLIC  
 SIGNAGE

10mm ACRYLIC SIGNAGE,  
 SPRAYED PANTONE 2161 C &  
 FIXED FLUSH BACK TO WALL



10mm



**SIDE PROFILE**

**Company Interiors** • 32232 NHF, Bristol

**Item A.**

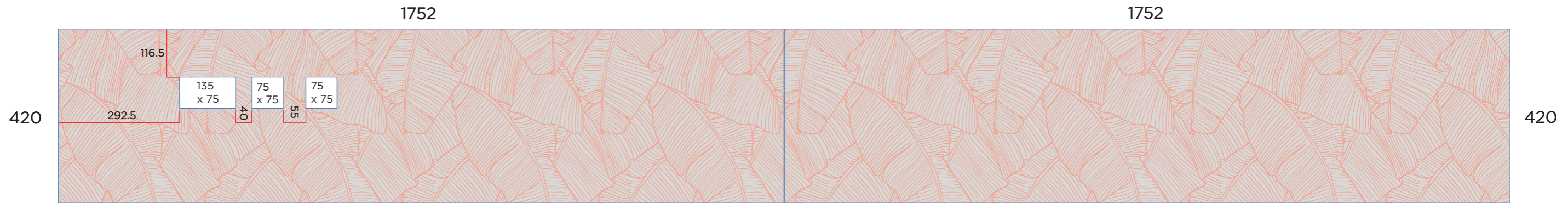
Artworks Solutions Unit 4 Sheene Road, Bedminster, Bristol BS3 4EG  
 E sales@artworks-solutions.com T 0117 9666 331 F 0117 9666 332 W artworks-solutions.com



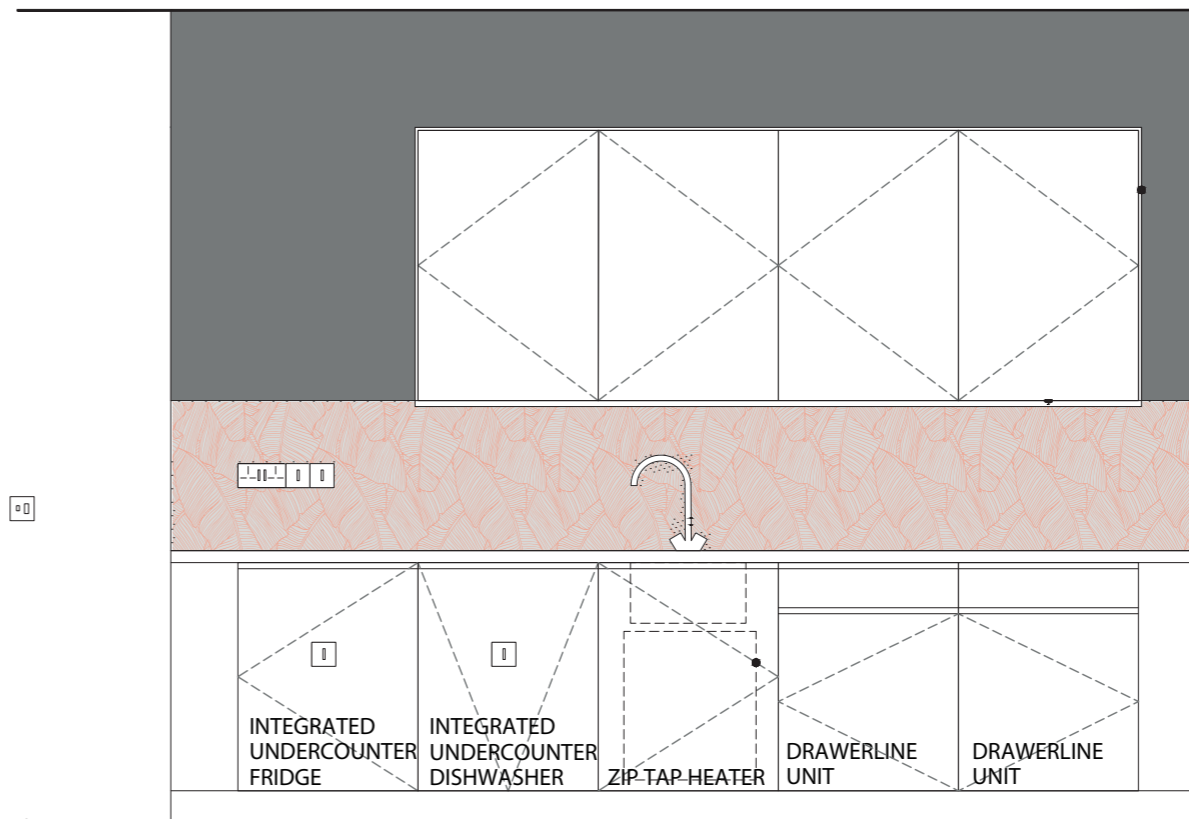
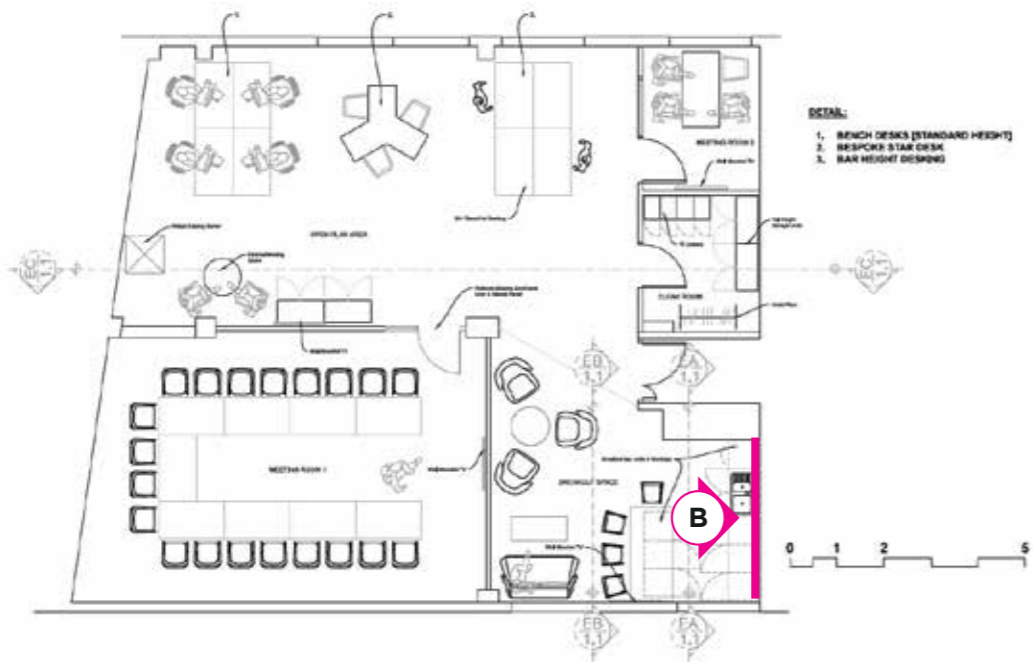
**DISCLAIMER.** We advise that you review your job carefully before approving. We encourage you to carefully review the content and pay special attention to the following items: spelling, fonts, grammar, punctuation, graphics, colour and finished size. After a proof is approved by yourself, Artworks are not liable for errors and a charge may be applicable to reproduce the artwork.



**B**  
SPLASHBACK



OPTION A



Elevation of kitchen area

**Company Interiors** • 32232 NHF, Bristol

Item B.

Artworks Solutions Unit 4 Sheene Road, Bedminster, Bristol BS3 4EG  
 E sales@artworks-solutions.com T 0117 9666 331 F 0117 9666 332 W artworks-solutions.com



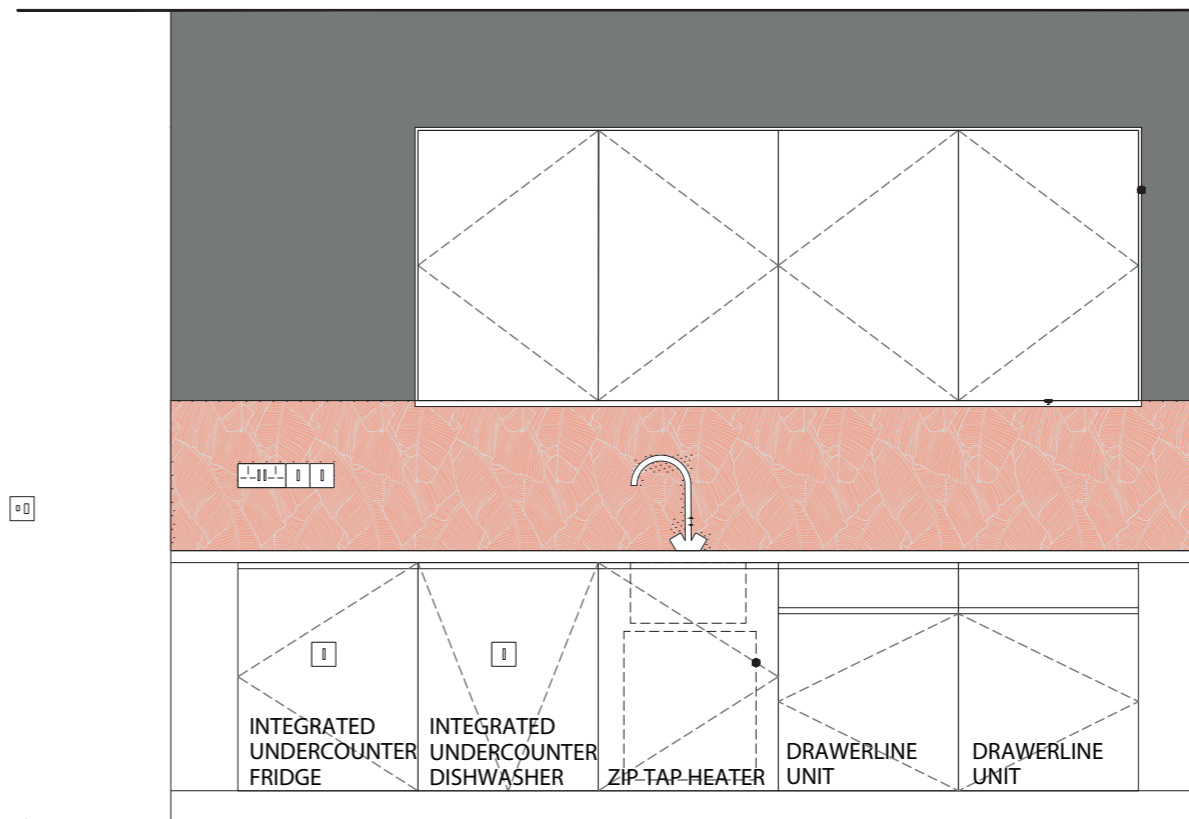
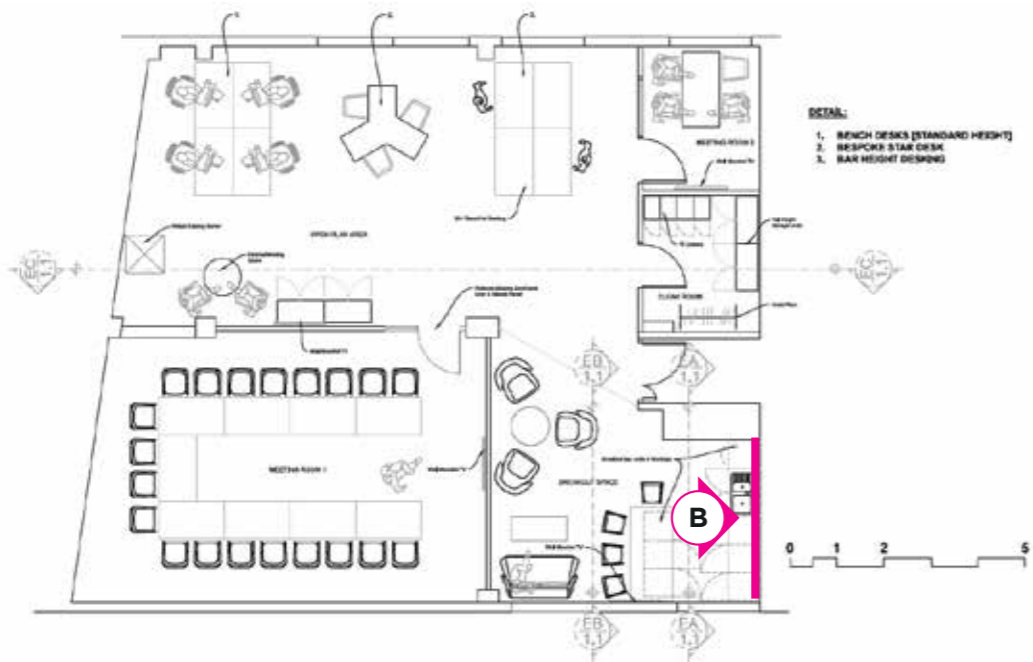
**DISCLAIMER.** We advise that you review your job carefully before approving. We encourage you to carefully review the content and pay special attention to the following items: spelling, fonts, grammar, punctuation, graphics, colour and finished size. After a proof is approved by yourself, Artworks are not liable for errors and a charge may be applicable to reproduce the artwork.



**B**  
SPLASHBACK



OPTION 2



Elevation of kitchen area

**Company Interiors** • 32232 NHF, Bristol

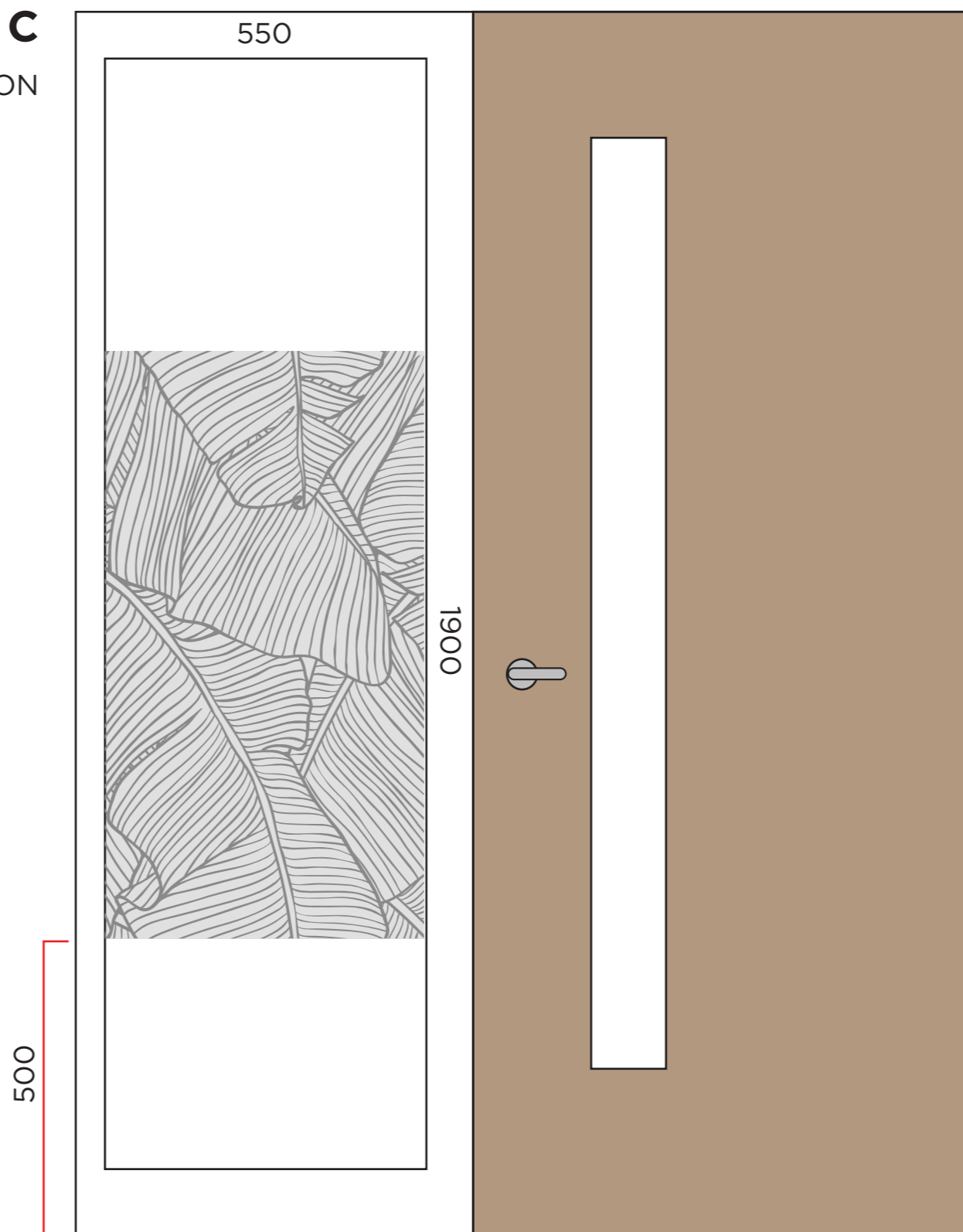
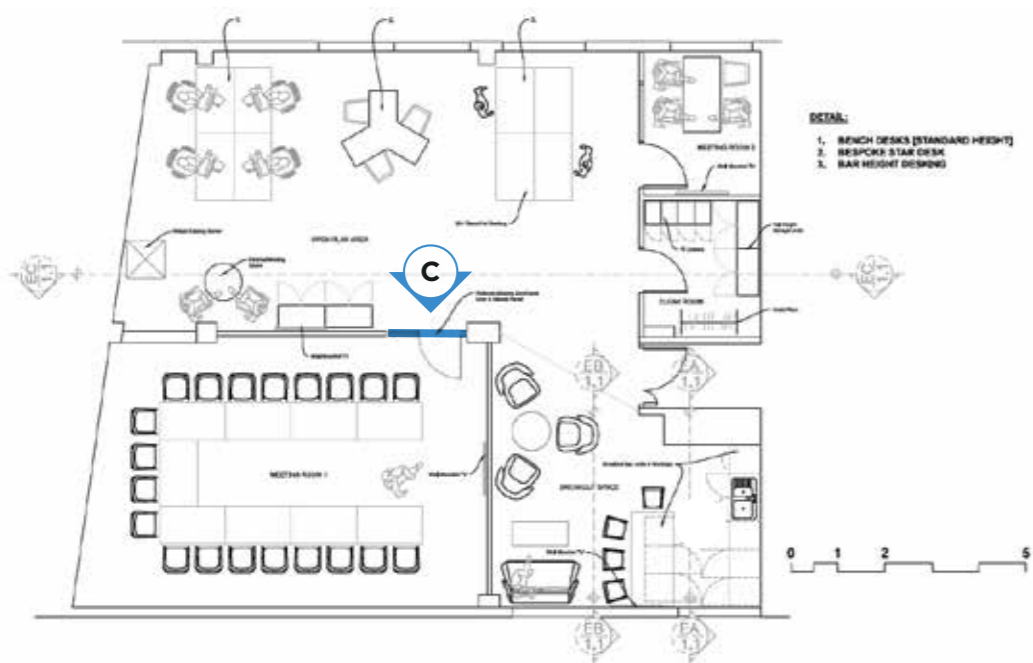
Item B.

Artworks Solutions Unit 4 Sheene Road, Bedminster, Bristol BS3 4EG  
 E sales@artworks-solutions.com T 0117 9666 331 F 0117 9666 332 W artworks-solutions.com



**DISCLAIMER.** We advise that you review your job carefully before approving. We encourage you to carefully review the content and pay special attention to the following items: spelling, fonts, grammar, punctuation, graphics, colour and finished size. After a proof is approved by yourself, Artworks are not liable for errors and a charge may be applicable to reproduce the artwork.

**C**  
MANIFESTATION



**Company Interiors** • 32232 NHF, Bristol

Item C.

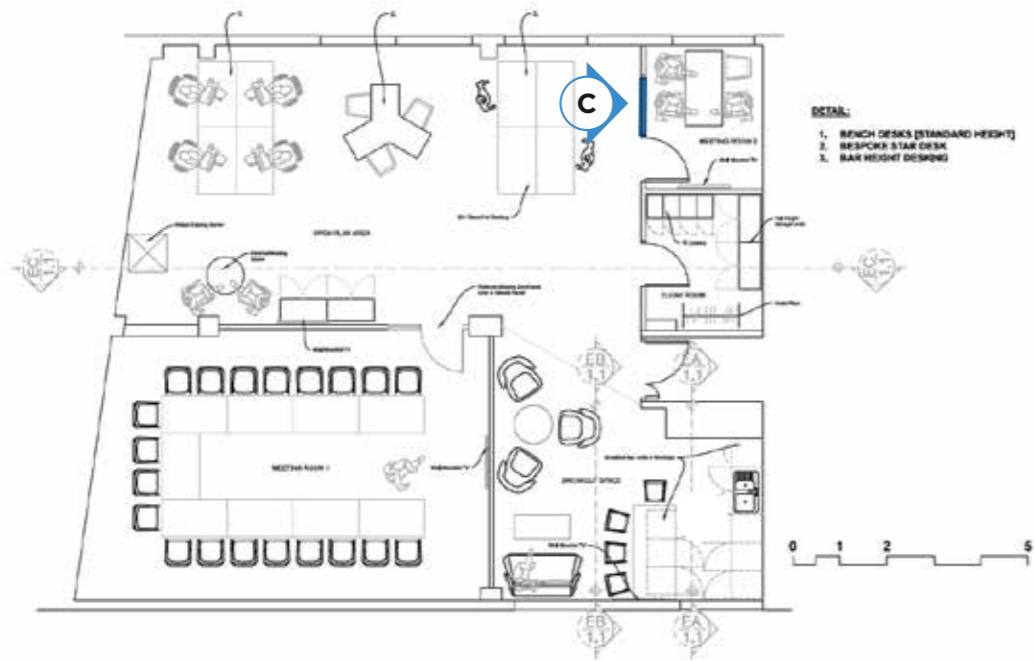
Artworks Solutions Unit 4 Sheene Road, Bedminster, Bristol BS3 4EG  
E sales@artworks-solutions.com T 0117 9666 331 F 0117 9666 332 W artworks-solutions.com



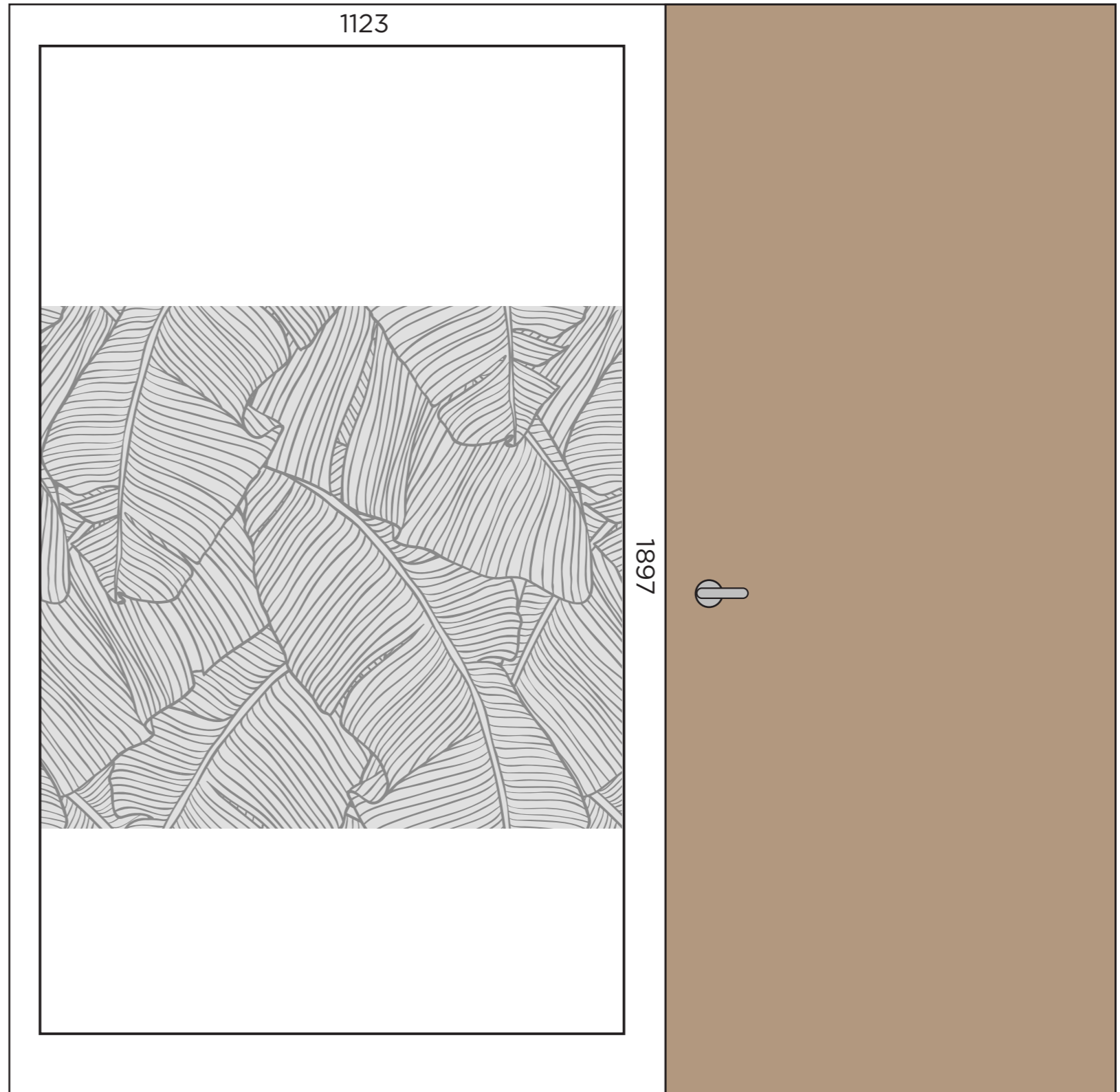
**DISCLAIMER.** We advise that you review your job carefully before approving. We encourage you to carefully review the content and pay special attention to the following items: spelling, fonts, grammar, punctuation, graphics, colour and finished size. After a proof is approved by yourself, Artworks are not liable for errors and a charge may be applicable to reproduce the artwork.

C

MANIFESTATION



500



Company Interiors • 32232 NHF, Bristol

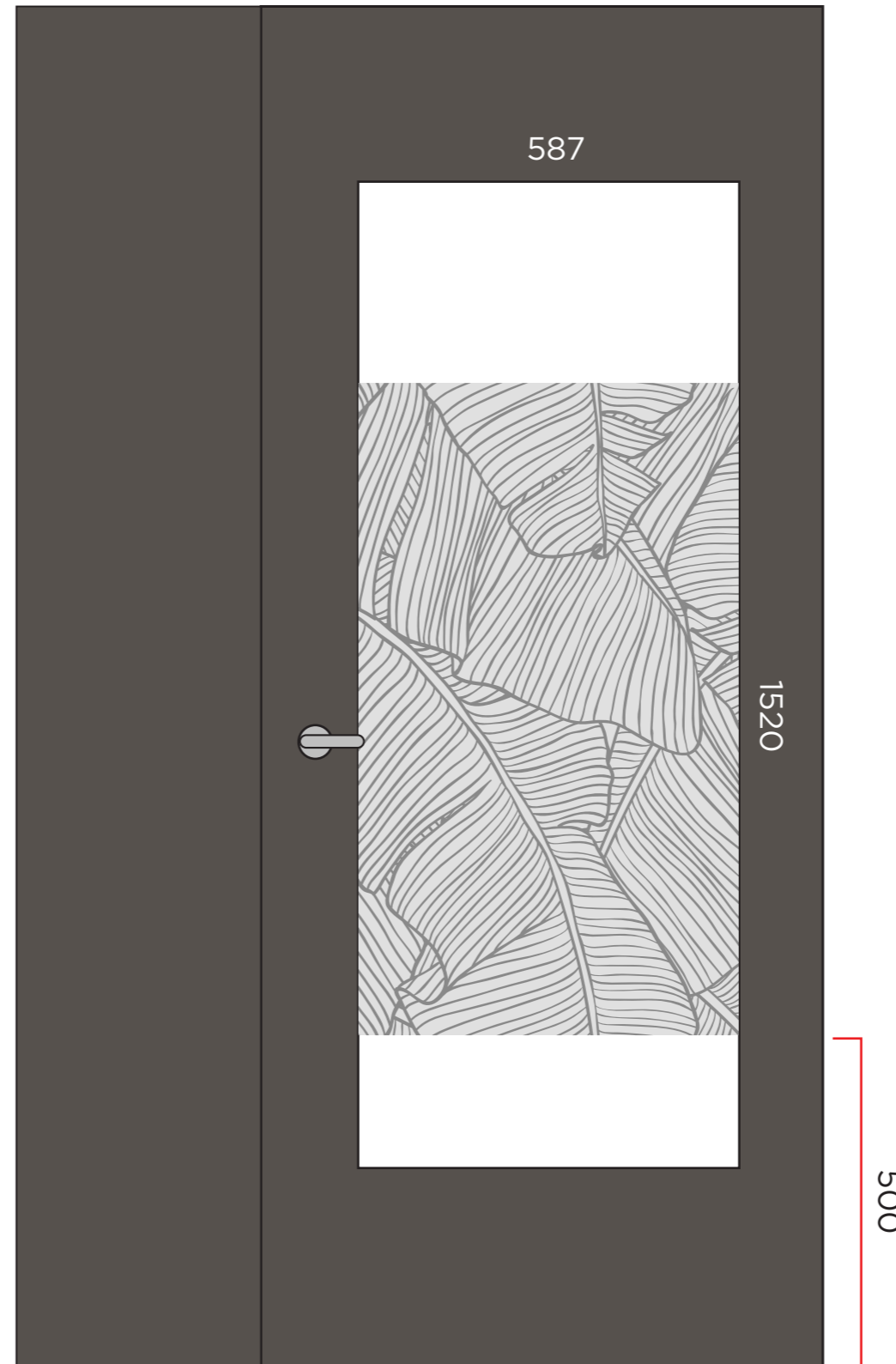
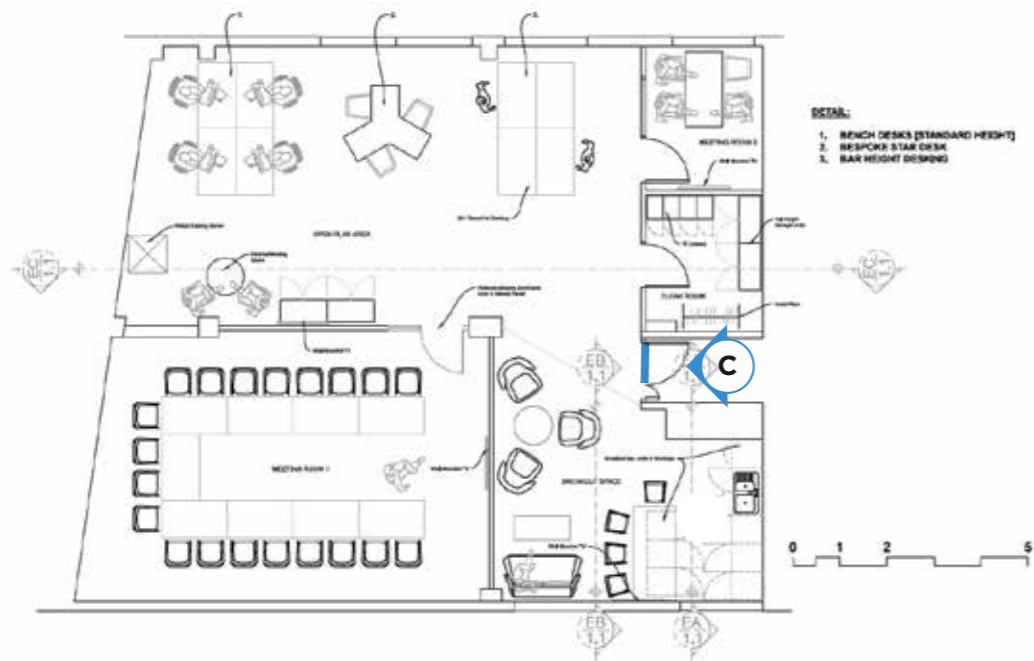
Item C.

Artworks Solutions Unit 4 Sheene Road, Bedminster, Bristol BS3 4EG  
 E sales@artworks-solutions.com T 0117 9666 331 F 0117 9666 332 W artworks-solutions.com



**DISCLAIMER.** We advise that you review your job carefully before approving. We encourage you to carefully review the content and pay special attention to the following items: spelling, fonts, grammar, punctuation, graphics, colour and finished size. After a proof is approved by yourself, Artworks are not liable for errors and a charge may be applicable to reproduce the artwork.

**C**  
MANIFESTATION



**Company Interiors** • 32232 NHF, Bristol

Item C.

Artworks Solutions Unit 4 Sheene Road, Bedminster, Bristol BS3 4EG  
E sales@artworks-solutions.com T 0117 9666 331 F 0117 9666 332 W artworks-solutions.com



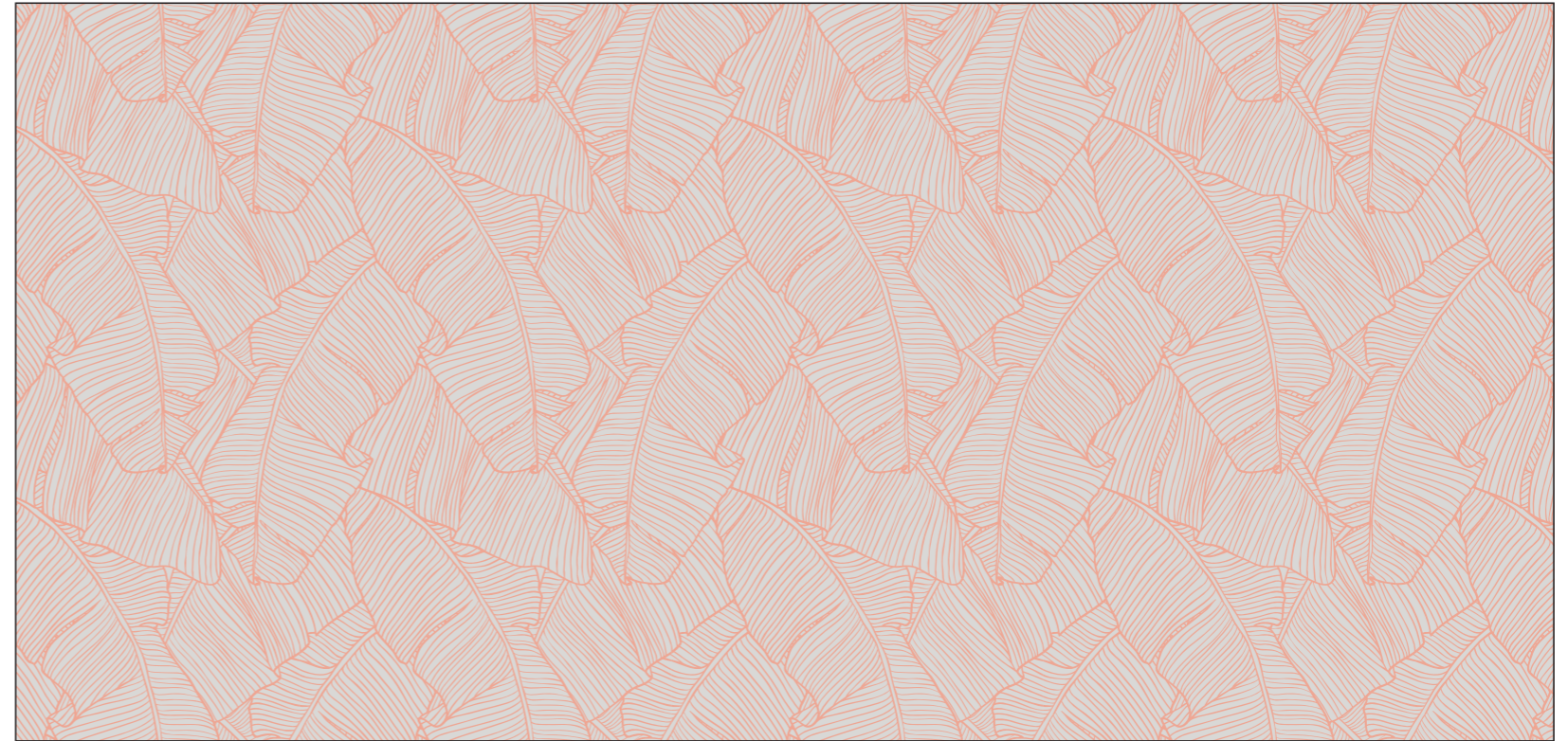
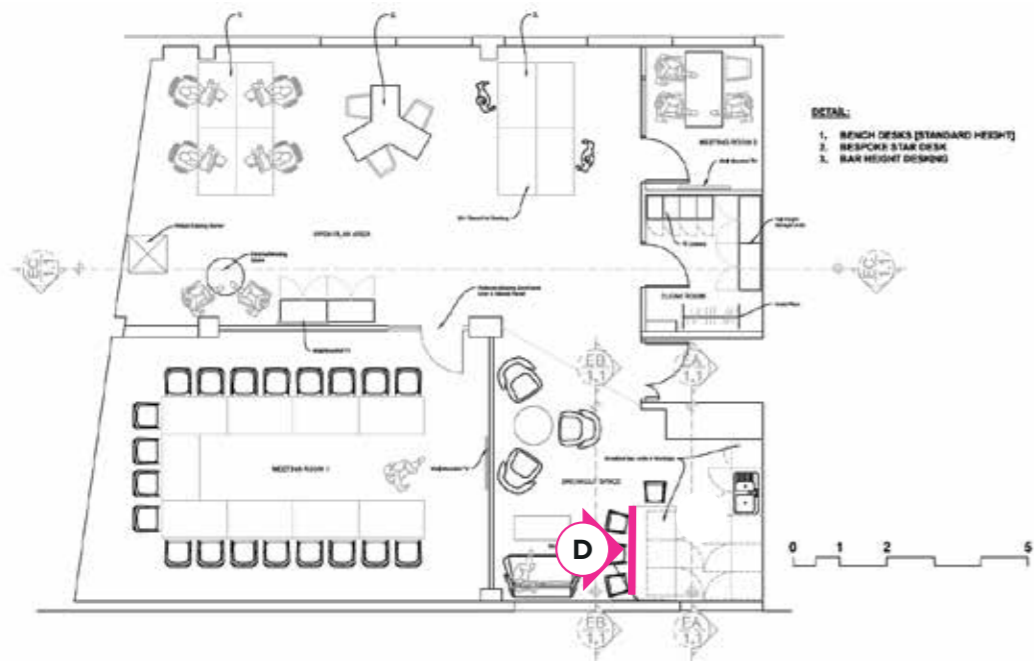
**DISCLAIMER.** We advise that you review your job carefully before approving. We encourage you to carefully review the content and pay special attention to the following items: spelling, fonts, grammar, punctuation, graphics, colour and finished size. After a proof is approved by yourself, Artworks are not liable for errors and a charge may be applicable to reproduce the artwork.

D

BREAKFAST BAR VINYL LOGO

2145

1030



Option A

Company Interiors • 32232 NHF, Bristol

Item E.

Artworks Solutions Unit 4 Sheene Road, Bedminster, Bristol BS3 4EG  
E sales@artworks-solutions.com T 0117 9666 331 F 0117 9666 332 W artworks-solutions.com



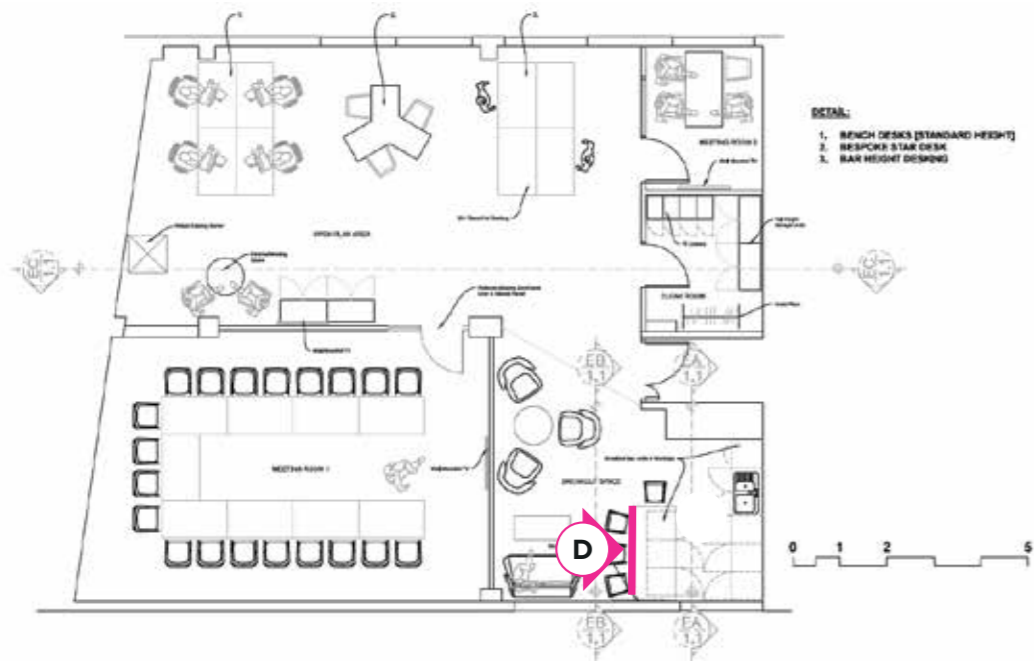
**DISCLAIMER.** We advise that you review your job carefully before approving. We encourage you to carefully review the content and pay special attention to the following items: spelling, fonts, grammar, punctuation, graphics, colour and finished size. After a proof is approved by yourself, Artworks are not liable for errors and a charge may be applicable to reproduce the artwork.

D

BREAKFAST BAR VINYL LOGO

2145

1030



Option B

Company Interiors • 32232 NHF, Bristol

Item E.

Artworks Solutions Unit 4 Sheene Road, Bedminster, Bristol BS3 4EG  
E sales@artworks-solutions.com T 0117 9666 331 F 0117 9666 332 W artworks-solutions.com



**DISCLAIMER.** We advise that you review your job carefully before approving. We encourage you to carefully review the content and pay special attention to the following items: spelling, fonts, grammar, punctuation, graphics, colour and finished size. After a proof is approved by yourself, Artworks are not liable for errors and a charge may be applicable to reproduce the artwork.

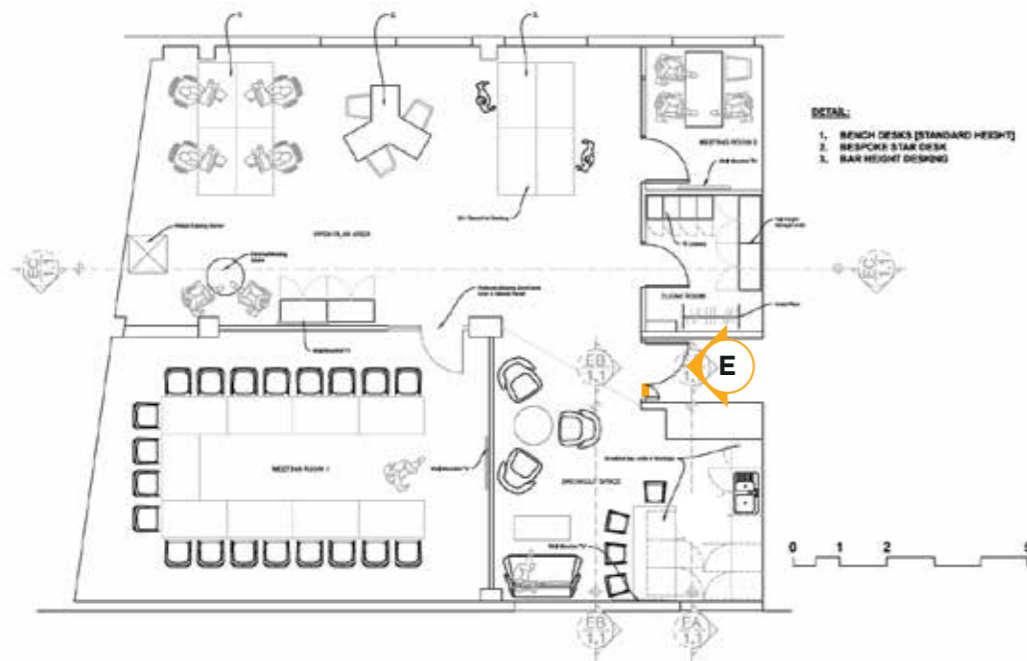


300

210

# NATIONAL HOUSING FEDERATION

## E LOBBY SIGNAGE



**Company Interiors** • 32232 NHF, Bristol

Item E.

Artworks Solutions Unit 4 Sheene Road, Bedminster, Bristol BS3 4EG  
 E sales@artworks-solutions.com T 0117 9666 331 F 0117 9666 332 W artworks-solutions.com



**DISCLAIMER.** We advise that you review your job carefully before approving. We encourage you to carefully review the content and pay special attention to the following items: spelling, fonts, grammar, punctuation, graphics, colour and finished size. After a proof is approved by yourself, Artworks are not liable for errors and a charge may be applicable to reproduce the artwork.

840

Option A

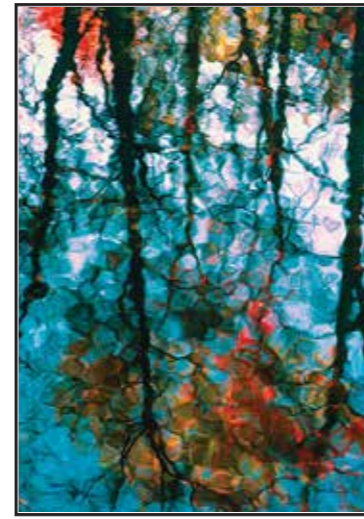
Option B

Option C

Option D

Option E

1188



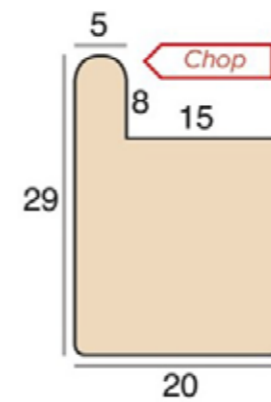
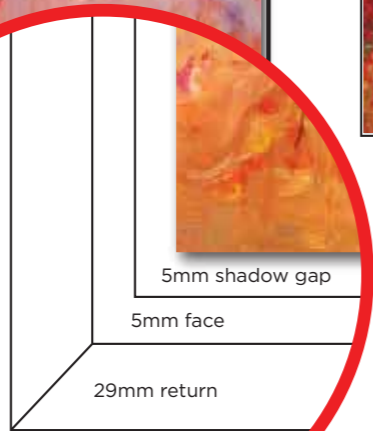
Option F

Option G

Option H

Option I

Option J



Company Interiors • 32232 NHF, Bristol

Item F.

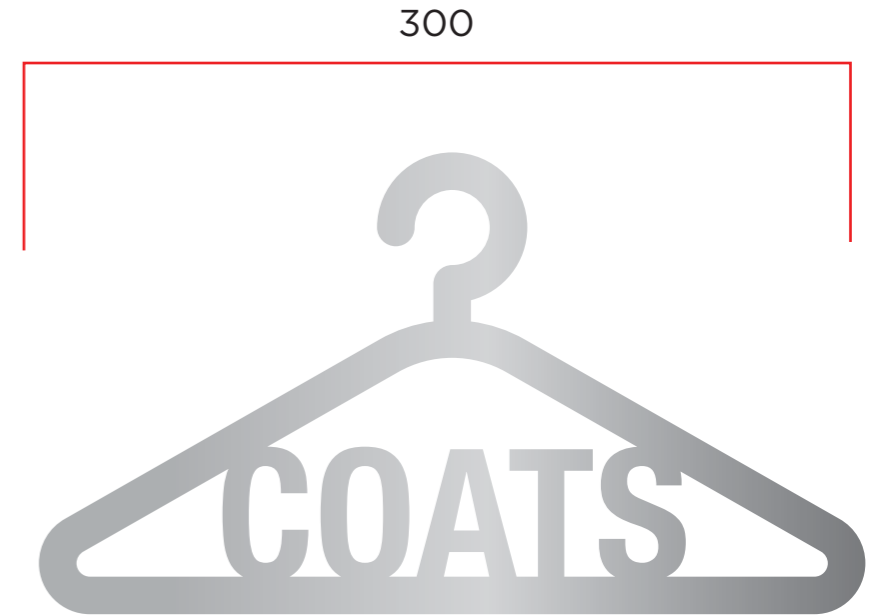
Artworks Solutions Unit 4 Sheene Road, Bedminster, Bristol BS3 4EG  
E sales@artworks-solutions.com T 0117 9666 331 F 0117 9666 332 W artworks-solutions.com



**DISCLAIMER.** We advise that you review your job carefully before approving. We encourage you to carefully review the content and pay special attention to the following items: spelling, fonts, grammar, punctuation, graphics, colour and finished size. After a proof is approved by yourself, Artworks are not liable for errors and a charge may be applicable to reproduce the artwork.

**G**

COAT SIGNAGE



**Company Interiors** • 32232 NHF, Bristol

**Item G.**

**Artworks Solutions** Unit 4 Sheene Road, Bedminster, Bristol BS3 4EG  
E sales@artworks-solutions.com T 0117 9666 331 F 0117 9666 332 W artworks-solutions.com



**DISCLAIMER.** We advise that you review your job carefully before approving. We encourage you to carefully review the content and pay special attention to the following items: spelling, fonts, grammar, punctuation, graphics, colour and finished size. After a proof is approved by yourself, Artworks are not liable for errors and a charge may be applicable to reproduce the artwork.